



COMPANY PRESENTATION

IRD FALL MEETING 2023



A worldwide network

7000

EMPLOYEES
TOTAL



55

RESEARCH PARTNERS
IN THE INDUSTRY



60

KEY EXPERTS



25

UNIVERSITIES AND SCIENTIFIC
PARTNERS

24

COUNTRIES



250

R&D SPECIALISTS



6

CENTERS OF COMPETENCE



Highly advanced technologies



Ironmaking

- MIDREX H2 Plants
- Circular Pelletizing Technology



Steelmaking

- Vaicon Stopper
- EAF Quantum



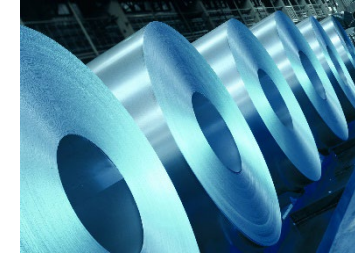
Continuous Casting

- Single-Roll DynaGap
- DynaJet Flex Nozzle



Hot Rolling

- Pair-Cross Mills
- Cooling Technologies



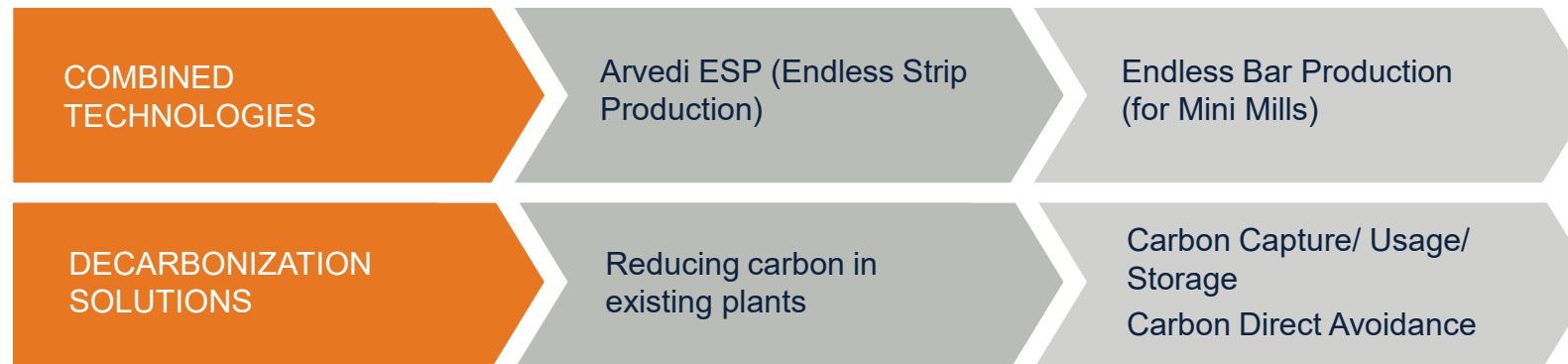
Cold Rolling

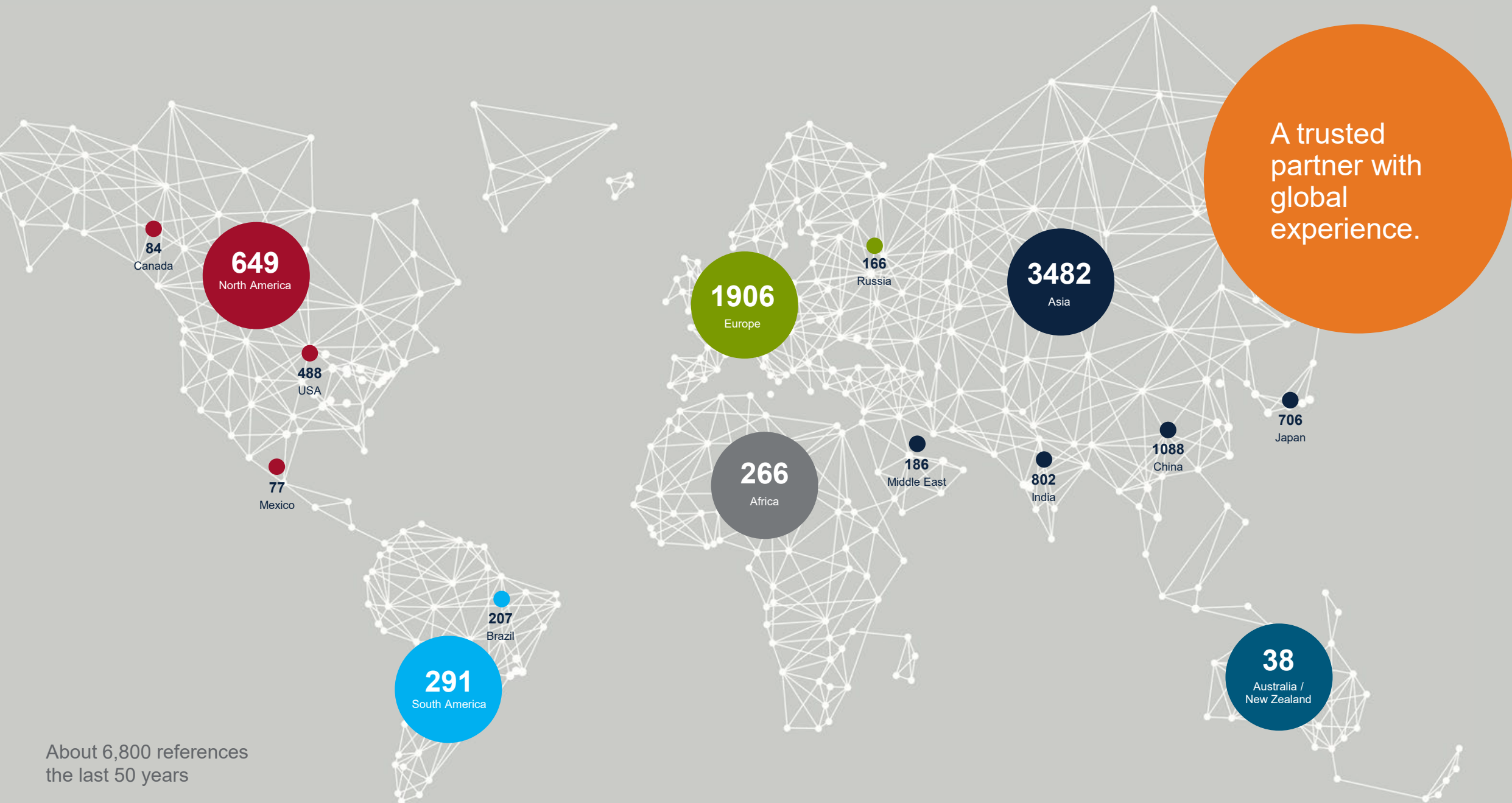
- Hyper UCM
- Minimum Quantity Lubrication



Strip Processing

- iBox Pickling Tank





A trusted partner with global experience.

About 6,800 references the last 50 years

Primetals Technologies USA Overview



Locations in the United States

★ Engineering/ sales

1. Alpharetta, GA (headquarters)
2. Canonsburg, PA
3. Fort Washington, PA

● Engineering/ manufacturing

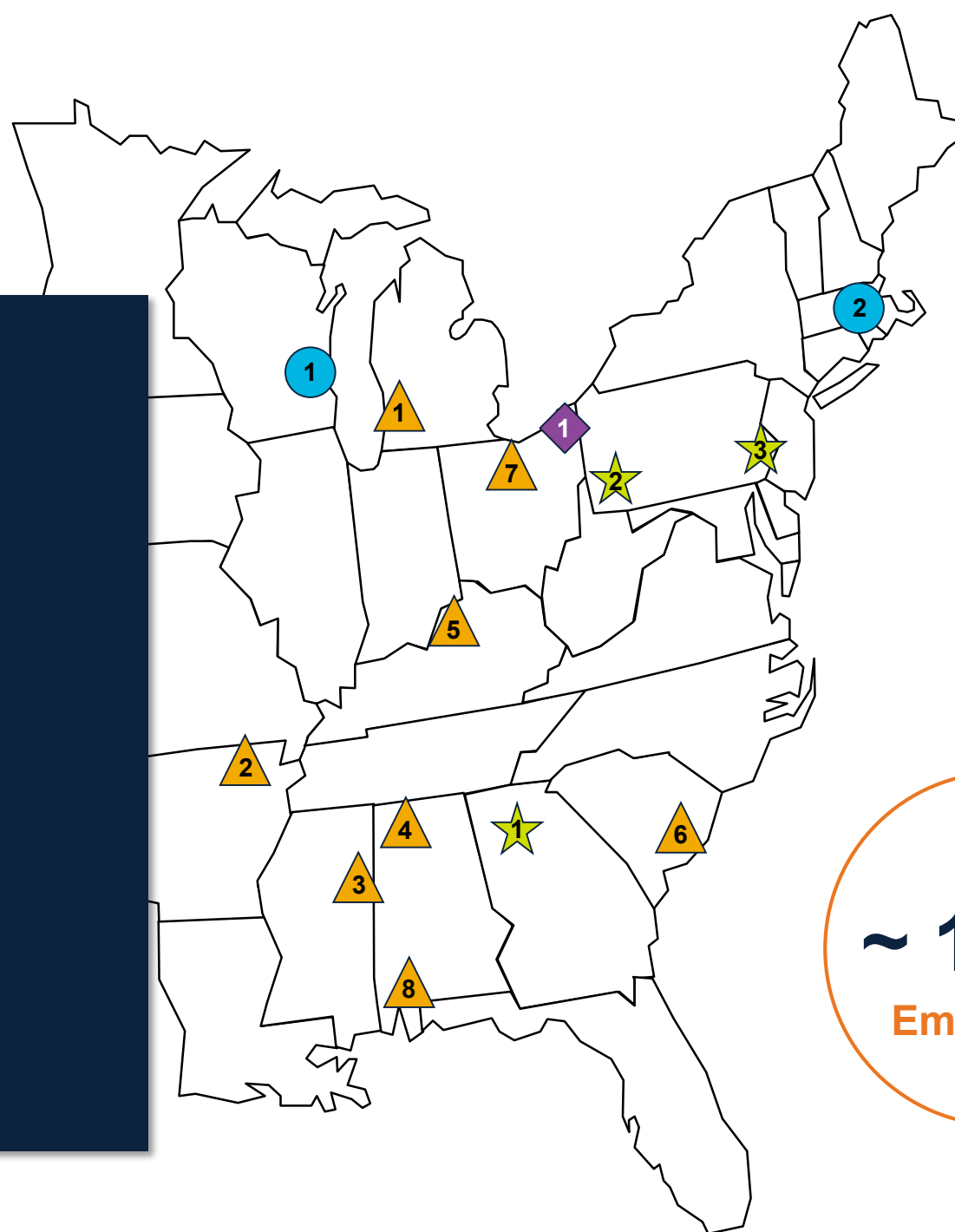
1. Sussex, WI
2. Sutton, MA

▲ Caster and EAF workshops

1. Benton Harbor, MI
2. Blytheville, AR
3. Columbus, MS
4. Decatur, AL
5. Ghent, KY
6. Huger, SC
7. New London, OH
8. Calvert, AL




◆ Rolling mill/ guides workshops

1. Warren/Cortland, OH



USA
~ 1,000
Employees

Primetals Technologies Key Location Capabilities and Primary Activities

Alpharetta, Georgia	Canonsburg, Pennsylvania	Ft. Washington, Pennsylvania	Sutton, Massachusetts
			
<ul style="list-style-type: none"> • Regional headquarters for Primetals Technologies in the United States (Primetals Technologies USA LLC) • Regional headquarters for Electrics/Automation business segment • Regional headquarters for Power Systems business sub-segment • Engineering • Project execution 	<ul style="list-style-type: none"> • Regional headquarters for mechanical business segments • Ironmaking • Steelmaking • Casting and Rolling • Regional headquarters for Metallurgical Services Offline Maintenance (caster and EAF workshops) • Engineering (Mechanical & Process Automation) • Project execution • Final testing/staging of E/A equipment 	<ul style="list-style-type: none"> • Regional headquarters for Furnace Technologies business sub-segment • Reheat furnaces for processing lines • Quench and temper mills • Engineering • Project execution 	<ul style="list-style-type: none"> • Global competency center for wire rod, long rolling and high-speed bar mills • Global headquarters for Metallurgical Services for rolling mills and processing lines (MSS) • Engineering • R&D • Manufacturing competency center • Project execution center

Primetals Technologies Portfolio by Location

UPSTREAM		DOWNSTREAM		METALLURGICAL SERVICES	ELECTRICS & AUTOMATION
Canonsburg	Sutton and Canonsburg	Canonsburg	Canonsburg and Ft. Washington	Alpharetta, Sutton, and Canonsburg	
					
<ul style="list-style-type: none"> • DRI / HBI • Blast furnace • LD/BOF • Converter technologies • Stainless steelmaking • Gas cleaning • Continuous casting • Arvedi ESP lines • Thin-strip casting 	<ul style="list-style-type: none"> • Mini mills • Electric steelmaking • Secondary metallurgy • Long rolling 	<ul style="list-style-type: none"> • Hot rolling mills • Plate mills • Steckel mills • Plate Mills • Steckel Mills • Plate Steckel Mills • Non Ferrous Rolling 	<ul style="list-style-type: none"> • Cold rolling mills • Strip processing lines • Aluminum rolling • Nonferrous mills • Plate and pipe heat treat • Strip anneal furnaces • Reheat furnaces • Special products 	<ul style="list-style-type: none"> • Electrical / automation • Rolling mills and processing lines • Continuous casters • EAF components • Material handling equipment • Spares and components 	<ul style="list-style-type: none"> • Plant digitalization • Power systems and power distribution • Modernization (packages and products) • Reheat furnace process models • Level 2 modeling

Sutton Location History

- The company's Sutton location has its historical roots as Morgan Construction Company, which was founded in 1888 in Worcester (15 minutes to the north)
 - The Worcester area used to be the center for wire production in the United States
 - Washburn and Moen had a monopoly on barbed wire production in the late 1800's



- Morgan Construction company was acquired by Siemens in 2008 and was part of Siemens VAI Metals until 2015
- In 2015, Primetals Technologies was founded as a joint venture between Siemens and Mitsubishi Heavy Industries
- In 2023 Mitsubishi Heavy Industries obtained full ownership of Primetals Technologies

Location — Sutton, Massachusetts, USA



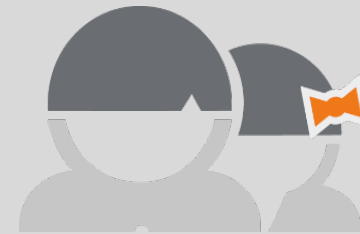
CONSTRUCTION
COMPLETED IN **2020**

183,000 sq. ft
STATE-OF-THE-ART
ENGINEERING,
MANUFACTURING AND
SERVICE FACILITY

45+ MANUFACTURING MACHINES



300+
EMPLOYEES

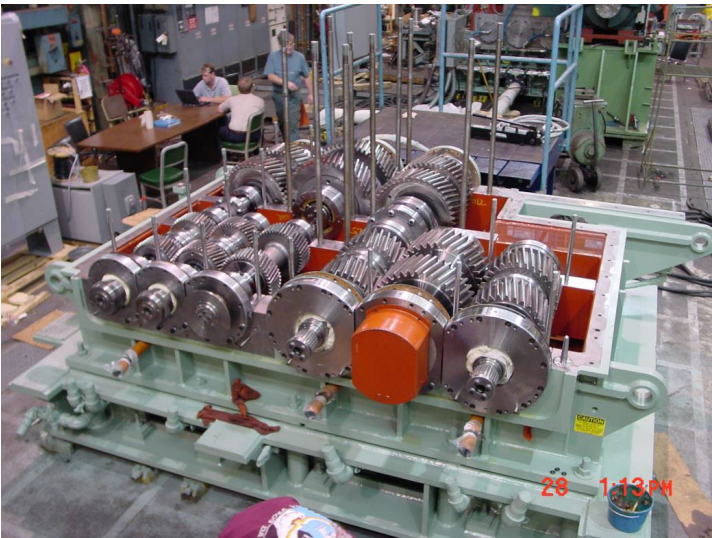




Global Center for Long Rolling Projects and Service

- Manufacturing for high speed LR equipment
- Critical machining and precision tolerance LR Parts
- Gearing
- Reconditioning and emergency/short cycle customer support
- New product development
- 183,000 sq. ft. (40,000 office space and 143,000 manufacturing)
- ~ 130,000 hours manufacturing capacity

Typical products



Plant Tour



Entrance

Drop off area

Safety/Rules

- No open toed shoes
- Safety glasses must be worn
- No photographs
- No cell phone usage

Logistics

- Bus 1 departs Sutton @ 1:30
- Bus 2 departs Sutton @ 3:30